

Slowly

Spoken: ALL: MINSTREL:

wed-ding mu - sic play." And the peo-ple shout-ed qui-et - ly: "Hoo-ray!" For a

72 Tempo 10

prin - cess is a del - i - cate thing, Del - i - cate and dain - ty as a

dra-gon fly's wing. You can re - cog-nize a la - dy by her el - e - gant air, But a

Slowly

81 6

gen-u - ine prin-cess is ex - ceed - ing - ly rare.

Repeat ad lib - -
-- fade out as curtain rises.

No. 3

Opening For A Princess

Cue: QUEEN: Now, don't dilly-dally, Dauntless. It's nearly time for your cocoa.

Moderato

DAUNTLESS:

Oh, _____ I

5 LARKEN: DAUNTLESS: Tpt.

liked her. So did I Why _____ (Wsh)

Hn. Trb. GIRL: 2nd GIRL:

must ev - 'ry prin-cess get the bird? It's just ab-surd. I nev-er

DAUNTLESS:

heard a test so dif-fi - cult to pass. A -

14 Hp. etc. KNIGHTS:

las! A lass is what I lack, I lack a lass, a - las, a-lack! Through-

LADIES: Oh!

out the land no one may wed 'til Daunt - less shares his

mar - riage bed. The lone - ly spin - ster's life, Go

24 *Piu mosso*

ALL: and get the prince a roy - al wife. We have an

28 o - pen - ing for a prin - cess, For a gen - u - ine cer - ti - fied

LADIES: +Fl., Ob. 3

prin - cess. Tell us when you in - tend to end this di - lem - ma we're

KNIGHTS: 3 36

in. None of the la - dies give a fig for liv - in' in

ALL: 40

sin! We have an o - pen - ing for a prin - cess, For a

LADIES: +Fl., Ob.

beau - ti - ful, bon - a - fide prin - cess. Where's the du - ti - ful knight who'll

KNIGHTS: 3

right all the wrong we've been done? None of the

50 *Hr. Solo* LADIES: +Ob.

la - dies are hav - in' an - y fun. What to

LADIES:

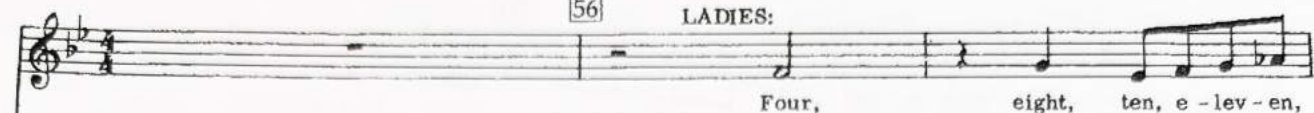
do? What to do? 3 Pi - ty the la - dies - in - wait - ing.

KNIGHTS:

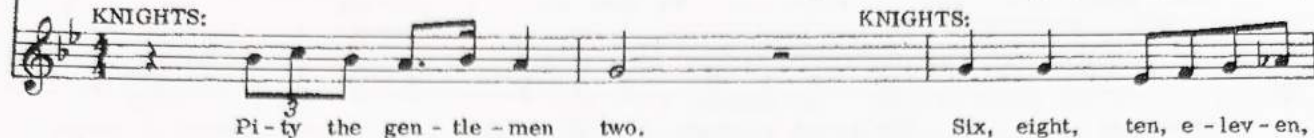
What to do? What to do?

56

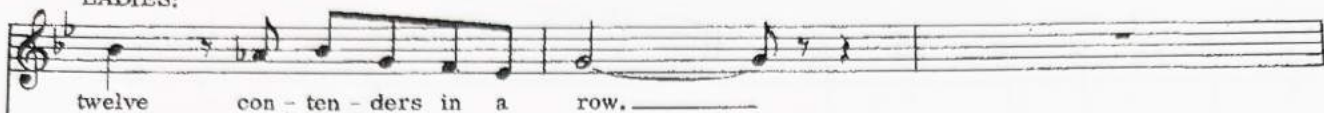
LADIES:



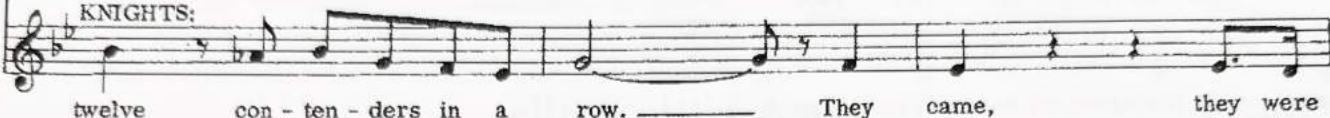
KNIGHTS:



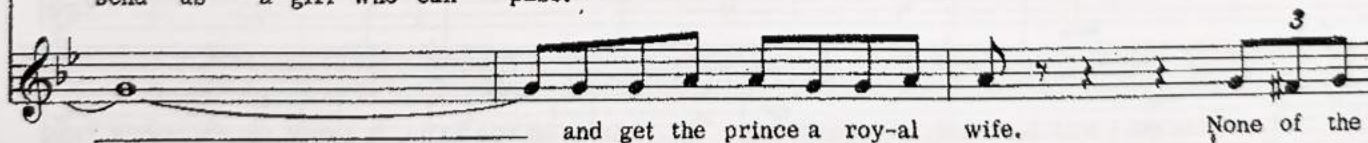
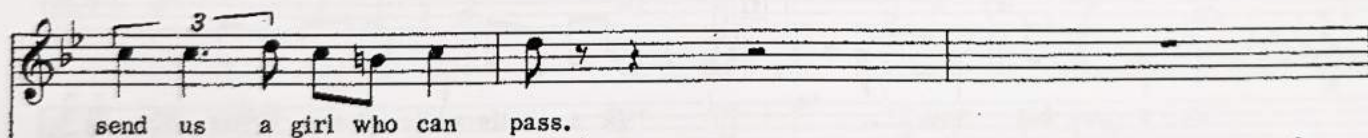
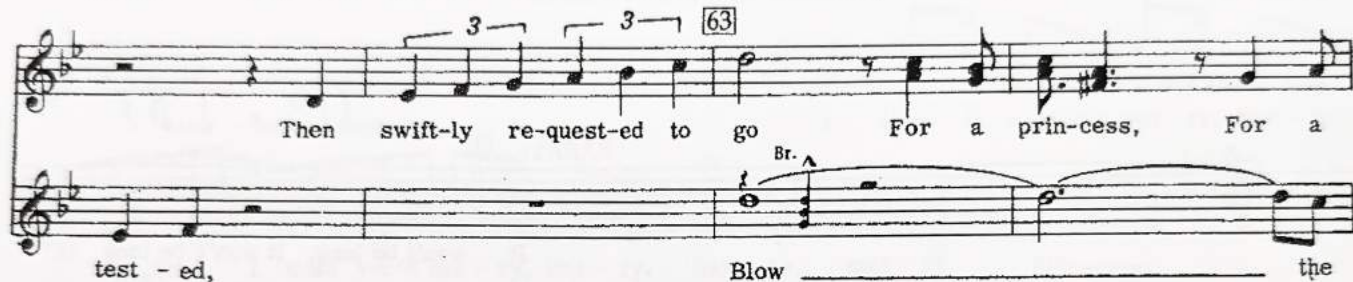
LADIES:



KNIGHTS:



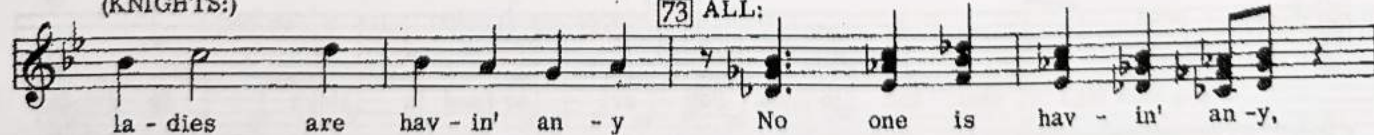
63



(KNIGHTS:)

73

ALL:



God knows how long since. — We have an o - pen - ing for a
 prin - cess Who's good e - nough, nice e - nough, sweet e - nough, smart e - nough,
 rich e - nough for our poor prince.

No. 4

In A Little While

Cue: LARKEN: Oh! Harry!

HARRY: $\text{Ad lib. } (\underline{\underline{\text{J}}}\underline{\underline{\text{J}}} = \underline{\underline{\text{J}}}\underline{\underline{\text{J}}})$ [3]
 It won't be long, it won't be long, It
 won't be-cause it can't be long Be - fore our dreams come true. Be -
 cause you know I don't be-long And fur - ther more, I shant be - long to
 an - y - one but you. — [11] In a lit-tle while, Just a lit-tle while,
 You and I will be one, two, three, four. [19] In a lit-tle while, I will see your smile
 On the face of my son to be For - ev - er hand in glove Is the
 way I have it planned. But I'll on - ly stay in love If the

No. 5

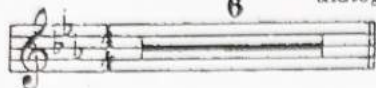
In A Little While—Reprise

Cue: LARKEN: I believe you.

Slowly

6

dialogue continues - - -



7 LARKEN:



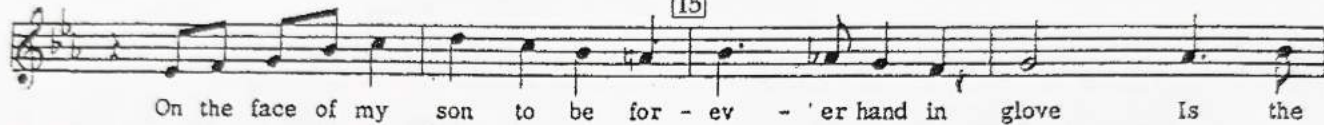
In a lit - tle while, Just a lit - tle while, You and I will be

HARRY:

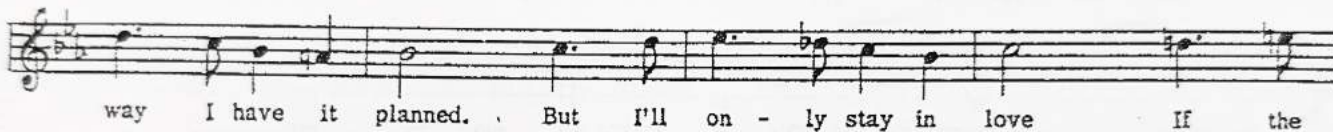


one, two, three, four. In a lit - tle while I will see your smile

15

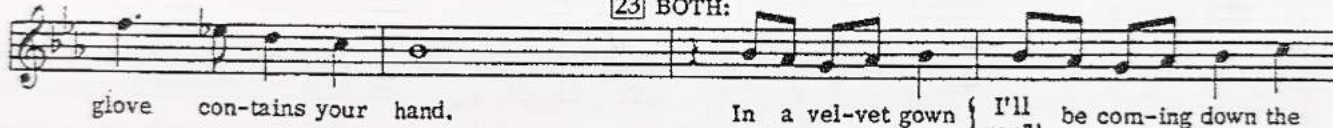


On the face of my son to be for - ev - 'er hand in glove Is the



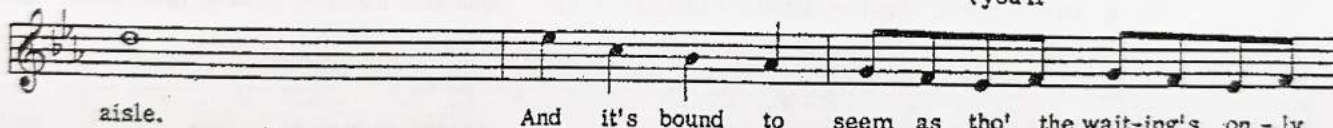
way I have it planned. But I'll on - ly stay in love If the

23 BOTH:



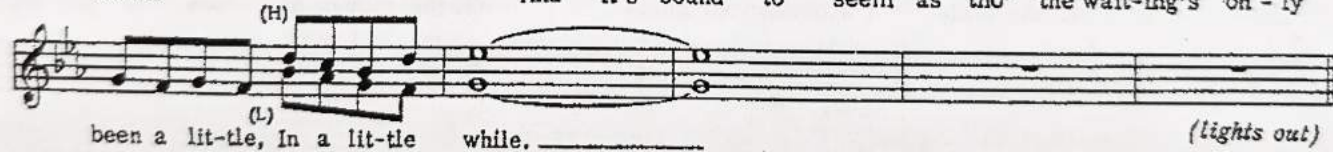
glove con-tains your hand.

In a vel-vet gown { I'll be com-ing down the
you'll



aisle.

And it's bound to seem as tho' the wait-ing's on - ly



been a lit-tle, In a lit-tle while.

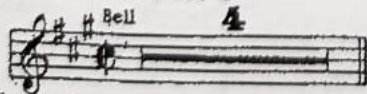
(lights out)

No. 6

Shy

Cue: WINNIFRED: Anyway, here I am. Who's the lucky man?

Moderate 2



5

WINNIFRED:

KNIGHT:



Hey, non - ny, non - ny, is it you? Hey, non - ny, non - ny, non - ny,

WINNIFRED:

KNIGHT:

no! Hey, non - ny, non - ny, is it you? Hey, non - ny, non - ny, non - ny,

WINNIFRED:

no! Hey, non - ny, non - ny, is it you, or you, or you, or you, or

DAUNTLESS: (spoken)

QUEEN: No, No, No!

Non - ny, nec - ny, noo - ny, non - ny, nec - ny, non - ny, noo - ny,

WINNIFRED:

Some - one's be - ing

bash - ful. That's no way, to be,

Not with me. Can't you see that

I am just as em - bar - rassed as you? And

I can un - der - stand your point of view: I've al - ways been

Moderately fast 4 Shy, I con - fess it, I'm shy! Can't you guess that this

con - fi - dent air is a mask that I wear, 'cause I'm shy?

And you may be sure: way down deep I'm de -

mure. _____ Though some peo - ple I know might de - ny it, At
 bot - tom I'm qui - et and pure! _____ I'm a - ware that it's
 [60] wrong _____ to be meek as I am; My chanc - es may pass me by. I pre - tend to be
 strong _____ but as weak as I am, All I can do is try, God knows I
 [68] try! _____ etc. _____ Though I'm fright - ened and shy _____
 _____ And de - spite the im - pres - sion I give, I con - fess that I'm liv - ing a
 lie, _____ Rubato
 [78] Moderate 2 Be - cause I'm ac - tual - ly ter - ri - bly ti - mid and hor - ri - bly
 shy. _____ Though a
 [82] la - dy may be drip - ping with gla - mour, As
 oft - en as not she - 'll stum - ble and stam - mer When
 [94] sud - den - ly con - front - ed with ro - mance. _____ And she's
 like - ly to fall on her face _____ When she's

fi - nal - ly face to face with a pair of pants.

Quite oft - en the la - dy's not as

hard to please as she seems. Quite

oft - en she'll set - tle for some - thing less than the man of her

dreams.

122 KNIGHTS:
I'm go - ing fish - ing for a mate. She's go - in' fish - ing for a

WINNIFRED: KNIGHTS:
mate. I'm gon - na look in ev - 'ry nook. She's gon - na look in ev - 'ry

130 WINNIFRED:
brook. But how much long - er must I wait With bait - ed

138 **46** WINNIFRED:
breath and ho - ok? And that is

185
why, Though I'm pain - ful - ly shy, I'm in - sane to know

189 Più mosso - Charleston beat KNIGHT: WINNIFRED:
Which sir? You, sir? Not I, sir. Then who, sir?

Where, sir? And when, sir? I could - n't be tens - er, So

197

Let's get— this done, man.— Get on with— the fun, man.

KNIGHTS & LADIES: The la - dy is one man

I am one man shy.

Jazz 4

No. 6a

Fanfare

cue: QUEEN: When you marry - if you marry - - you'll marry a real princess, you'll - - -

Piano

Br. *ff*

No. 6b

The Minstrel, The Jester And I

cue: MINSTREL: We know you can't talk - - (Dialogue continues)

JESTER: You certainly do.
MINSTREL and JESTER:

4 2

We have

9

on - ly two voic - es a - mong us and yet There's a third voice: a

17

voice in dis - guise. You'll be hear - ing a tri - o and

not a du - et If you lis - ten with both of your eyes.

25*

Kind - ly (lis - ten) with both of your (eyes.) We pro -

29

duce a u - nique and re - mark - a - ble blend When we raise our three

* In pantomime

83

Ten, I think would be plenty — Bet - ter

still, make it twenty. — And to play it safe, in the e -

vent e - ven that's not e - nough to in - sure that she sleeps, We'll

99

give her a soothing sed - a - tive, won't we? You can whip up a

drink. Some - thing stun - ning; Ah -- Oh, but you're dev - lish.

Sung:

I love the way you think. She's in - sen - si - tive, so in - sen - si - tive,

She'll fall a - sleep, no doubt. God, but you're clev - er!

- Brill - liant! A gen - ius! You are di - vine - Get out!

No. 8

The Swamps Of Home

cue: WINNIFRED: Well, I don't like to brag.

WINNIFRED: *Rubato*
I come from the land of the fog - gy, fog - gy dew. oo -

oo - oo - Where walk - ing thru' the mead - ow in the

LADIES: oo —————

morn-ing is like walk-ing through glue. The swamps of

10 home are brushed with green and gold, At break of

LADIES: WINN:

day, At break of day. The swamps of

18 home are love-ly to be-hold From far a-

LADIES: WINN:

way, From far a-way. In my

26 Fi. soul is the beau-ty of the bog. In my mem'-ry the mag-ic of the

LADIES: WINN:

mud. Muh-uh-ud. I know that blood is thick-er than wa-ter, But the

DAUNTLESS: Blood

Swamps of Home are thick-er than blood, Where-e'er I

34 roam My heart grows dark and oold. My face grows

grey When shad-ows fall and I hear the call

44 Move 3

Of the Swamps of Home. I hear it call-ing me now, call-ing me

back, Call - ing me: "Win - ni - fred, Win - ni - fred, Win - ni - fred, Win - ni - fred,

Who do you think you are? Girl of the swamp, _____ You have gone too

far, Maid of the marsh - land, _____ Give up the

strug - gle. LIS - TEN: Lis - ten to the voice of the swamp, 55 WINN: Glug - gle, ug - gle,

ug - gle." Glug - gle, ug - gle, ug - gle. Where - e'er I roam The

whips of fate may smart, But deep down in my

Twice as slow

heart, _____ One thought will a - bid And will ne'er be for -

got - ten, _____ Though I search far and wide (as an echo) There is no land as

LADIES: rot - ten _____ Rot - ten, rot - ten, rot - ten, rot - ten, rot - ten, rot - ten, rot - ten, rot - ten,

pp (WINN:) LADIES: The Swamps of home.

rot - ten, As the Swamps of home.

made in Nor - man - dy.

in Nor - man - dy.

Segue

No. 13

Spanish Panic No. 2

JESTER: You'd better not let the Queen catch you walking.

Brightly

111

No. 14

Song of Love

cue: WINNIFRED: You can call me by my nickname.

DAUNTLESS: Winnie?
WINNIFRED: Fred.

Slowly

DAUNTLESS:

5 Rubato

WINN:

like you, Fred, I like you! You're just say - ing those words to be

DAUNT:

kind. No, I mean it. I like - - I mean, I love you, Fred! He is

DAUNT: 13

out of his me - di - e - val mind. I'm per - fact - ly sane and sound! I

nev - er felt bet - ter in my life! Ev - 'ry - bod - y! Ev - 'ry - bod - y! Ev - 'ry - bod - y, come and

17

meet my in - cip - i - ent wife!

65] CHORUS:

Fill the bowl to o - ver - flow - ing. Raise the gob - let high. With an

F and an R and an E and a D and an F R E D. FRED, Yea! I'm in

love with a girl named Fred. She wres - tles like a Greek. You will

clap your hands in won - der At her fab - u - lous tech - nique!

81] CHORUS:

(handclaps)

WINN: (almost losing control)

Ah - ah - ah, ah, ah, ah, ah, ah, ah, ah, ah, ah, ahhh!

89] CHORUS:

Fl. + Vlns.

Fill the bowl to o - ver - flow - ing. Raise the gob - let high With an

F and an R and an E and a D And an F R E D. FRED, Yea! I'm in

love with a girl named Fred, Who danc - es with such grace. You are

bound to sing her prais - es 'til you're pur - ple in the face!

105] CHORUS:

Bra - vo, bra - vo, bra - vis - si - mo, Bra - vo, bra - vis - si - mo.

(handclaps)

WINN: (even wilder)

Musical staff with lyrics: Ah - ah - ah, ah, ah, ah, ah, ah, ah, ah, ah, ah, ahhh!

117 CHORUS:

Musical staff with lyrics: Fill the bowl to o - ver - flow - ing. Raise the gob - let high. With an

DAUNT:

Musical staff with lyrics: F and an R and an E and a D And an F R E D, FRED, Yea! I'm in

125

Musical staff with lyrics: love with a girl named Fred. She's mu - si - cal to boot. She will

Musical staff with lyrics: set your feet a - tap - ping When she plays up - on her

WINN: (on lute - ad lib.)

Musical staff with lyrics: Bra - vo, bra - vo, bra - vis - si - mo, Bra - vo, bra - vis - si - mo.

137 CHORUS:

Musical staff with lyrics: Bra - vo, bra - vo, bra - vis - si - mo, Bra - vo, bra - vis - si - mo. (handclaps)

WINN: (wilder than ever)

149

CHORUS: Ah - ah - ah, ah,

Musical staff with lyrics: ah, ah, ah, ah, ah, ah, ah, ah, ah, ah, ahhh! Fill the bowl to o - ver - flow - ing

Musical staff with lyrics: Raise the gob - let high. With an F and an R and an E and a D And an

DAUNT:

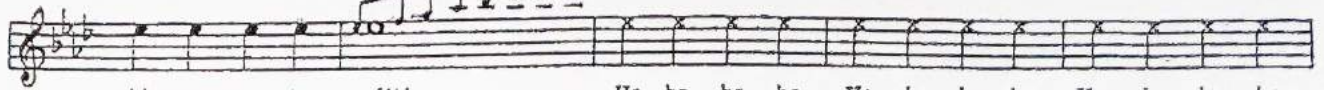
157

Musical staff with lyrics: F R E D, FRED, Yea! I'm in love with a girl named Fred. A

Musical staff with lyrics: clev - er clown - ish wit. When she does her fun - ny pan - to - mime Your

165

CHORUS:



sides are sure to split! Ha, ha, ha, ha, Ho, ho, ho, ho, Ha, ha, ha, ha.
WINN: (on lute - ad lib.)



173

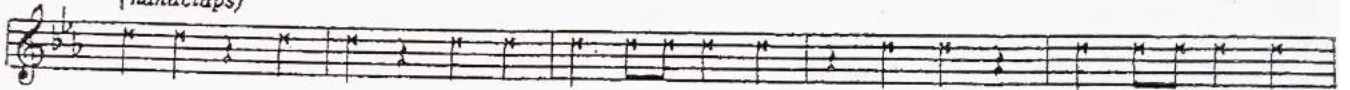
Ho!
ALL:



Bra - vo, bra - vo, bra - vis - si - mo, bra - vo, bra - vis - si - mo

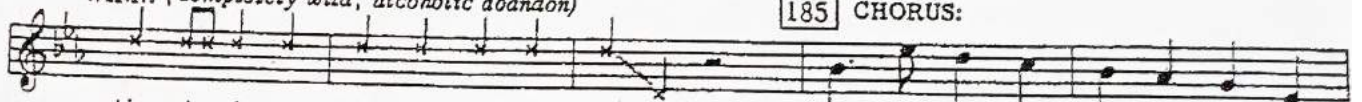
177

(handclaps)

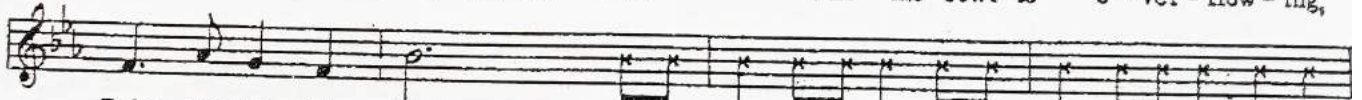


WINN: (completely wild, alcoholic abandon)

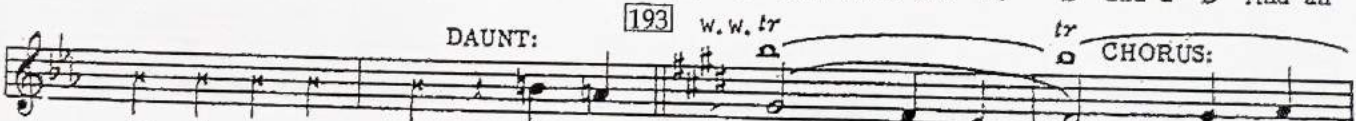
185 CHORUS:



Ah ah ah, ah, ah, ah, ah, ahhh! Fill the bowl to o - ver - flow - ing,



Raise the gob - let high. With an F and an R and an E and a D And an



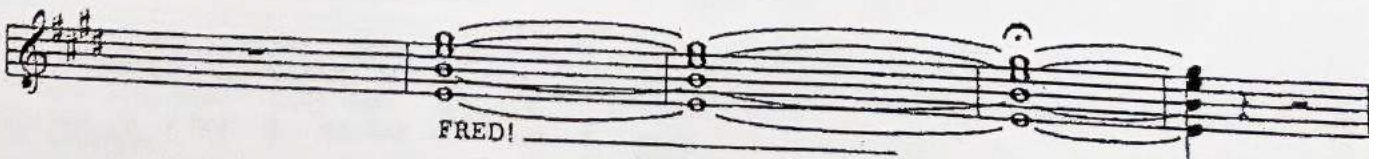
F R E D, FRED! I'm in love with a girl. He's in



love with a girl named F



R E D

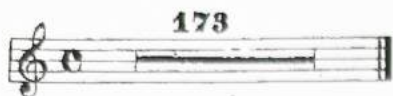


FRED!

End Act I

No. 15

Entr'acte



No. 16

Opening-Act II

cue: LARKEN sneezes

QUEEN: (Shouted) **ALL:**
 Qui - et! Qui - et! The queen in - sists on qui - et. She's
 or - dered twen - ty mat - tress - es, The soft - est and the best. And she's
 threat - ened ex - e - cu - tion If we dare dis - turb the rest Of her
 ver - y spe - cial guest. She's or - dered qui - et, (qui - et) qui - et (qui - et)

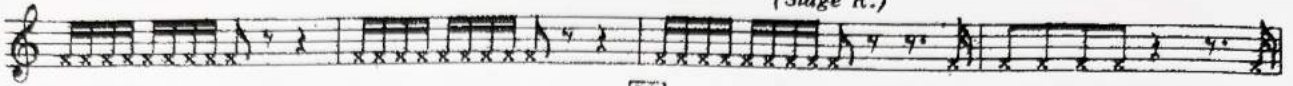
9 Slow 4

QUEEN: (claps) **CAST: (off stage)** **QUEEN: LADY: Q: L:**
 Sheets! Right. Pil - lows! Right.
Q: L: Q: MEN: [15] 2
 Blan - kets! Right. Mat - tress - es! Right, right, right.
1 7 ALL: (Shouted)
 Bra - vo, bra - vo, bra - vis - si - mo!
[26] LADIES: (claps) QUEEN:
 (scream) (scream) (scream)

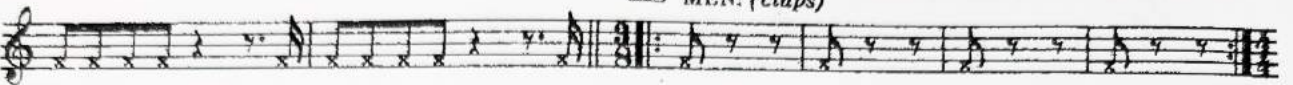
[Maltresses on stairs]



(Stage R.)



[39] MEN: (claps)

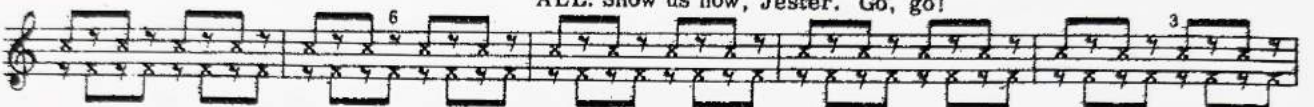


[43] (Clap)



(Foot stamp)

ALL: Show us how, Jester. Go, go!



[55] (Finger snaps)

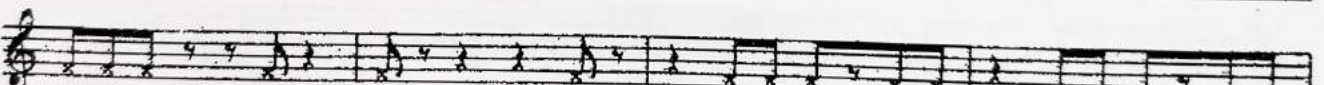
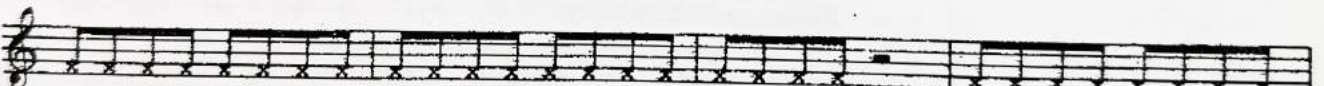
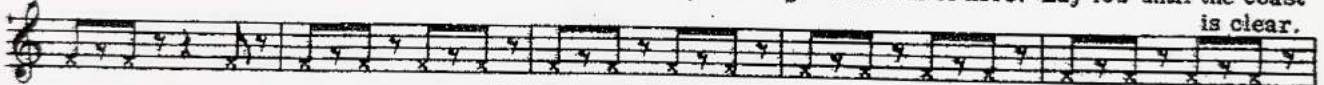


2



(Claps)

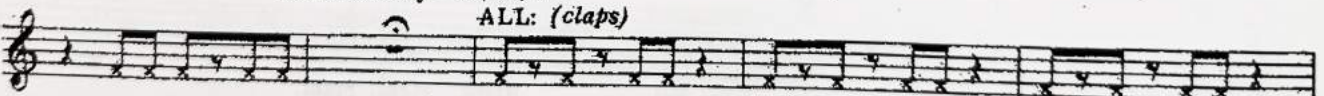
JESTER: Not yet. I'll get them out of here. Lay low until the coast is clear.



[77]

JESTER: Hey--ha, ha, ha--

ALL: (claps)



(Shouted)

Bra-vo!

No. 22

Nightingale Lullaby

Two starts

(First time)-Cue: QUEEN: You were brought here to put a live princess to sleep,
not to wake up a dead one.

(Second time-start at) Cue: WINNIFRED: Alright, we'll take it from the top.

NIGHTINGALE: (whistled) $\text{\textcircled{A}}$

The musical score for 'Nightingale Lullaby' is written in treble clef with a key signature of one flat (Bb) and a 3/4 time signature. It consists of eight staves of music. The first staff begins with a rest followed by a whistle-like melody. The second staff contains measures 10-13, featuring triplets and a change to 2/4 time. The third staff contains measures 14-17, with triplets and a change to 3/4 time. The fourth staff contains measures 18-21, with a change to 2/4 time. The fifth staff contains measures 22-25, with triplets and a change to 3/4 time. The sixth staff contains measures 26-29, with triplets and a change to 2/4 time. The seventh staff contains measures 30-33, with a change to 3/4 time and a repeat sign. The eighth staff contains measures 34-37, with a change to 2/4 time and a repeat sign. A bracket labeled '[Repeat if necessary]' spans the final two staves.

No. 22a

Wizard

Cue: WINNIFRED: All right, sheep- - I'm ready when you are!

The musical notation for 'Wizard' is a single staff in treble clef with a key signature of two sharps (F# and C#) and a 4/4 time signature. It begins with a whole note chord consisting of F#, C#, and G#.

[Lights fade]

No. 23

Finale

Cue: KING: Hop!
Skip!

Jump! All: [2]

How did she stay a - wake? That
STUDLEY: ALL:

pea was aw - f'ly small. It was - n't the pea, It
was - n't the pea, It was - n't the pea at all.

[10] Oh, life is grand, It's ver - y [16] in - t'rest - ing, We
think we un - der - stand. We think, we think we
know - - It's ver - y in - t'rest - ing. Thank you,
In 4 MEN:

Prin - cess, And Prin - cess we love you so! For a
[25] LADIES:
Oo (MEN:)

prin - cess is a del - i - cate thing, Del - i - cate and dain - ty as a
oo You can re - cog - nize a la - dy by her el - a - gant air, But a
dra - gon fly's wing. You can re - cog - nize a la - dy by her el - e - gant air, But a

(snore)
 gen-u - ine prin-cess is ex - ceed-ing - ly rare!
 gen-u - ine prin-cess is ex - ceed-ing - ly rare!
 End Act II
 attacca

No. 24 Bows and Exit Music

Moderately bright
 94