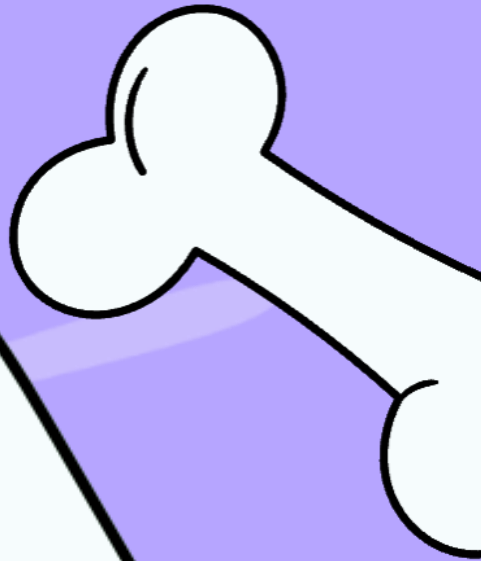
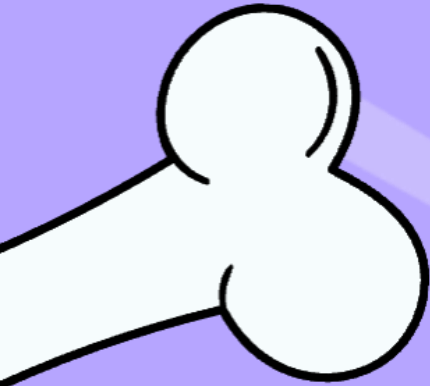
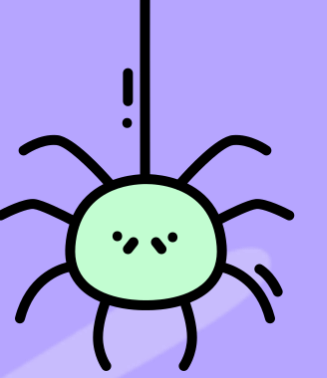




SOUTH LYON HIGH SCHOOL THEATRE



Beetlejuice



Spring Charity Show

Website!

www.SLHSTheatre.com

01

FORMS

02

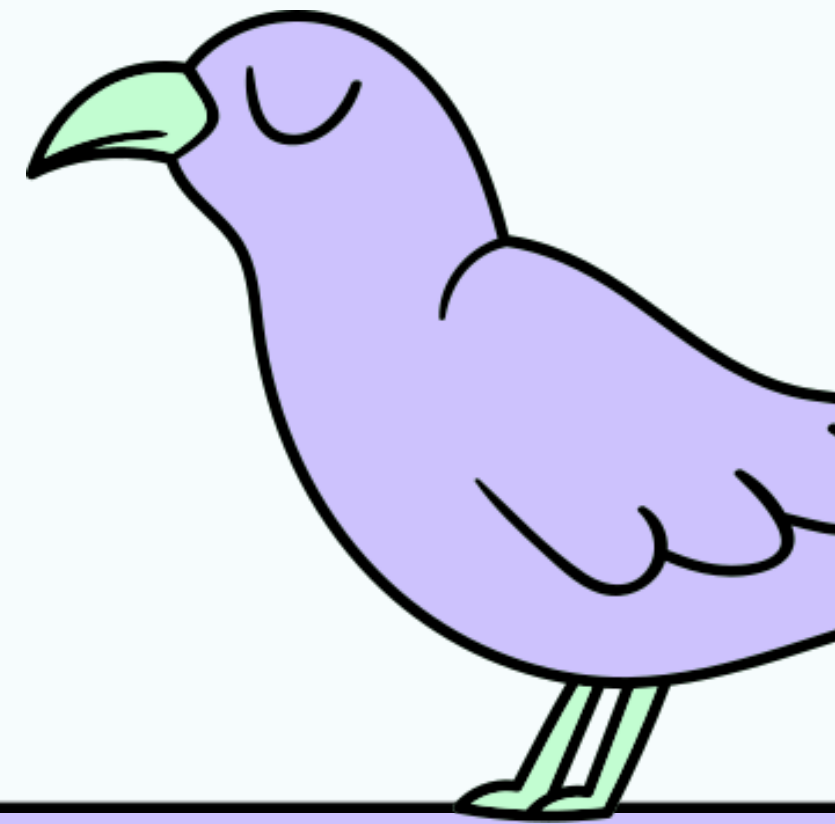
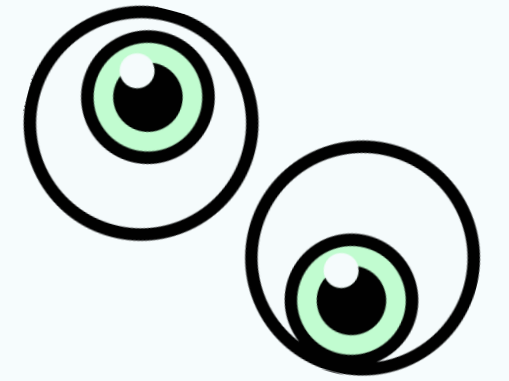
MATERIALS

03

MONEY

04

MORE!





www.SLHSTHEATRE.com

The Most Dead



Max Bardoni
STUDENT DIRECTOR

Julia Lebnick
VOCAL MUSIC DIRECTOR



Lucie Harvey
CHOREOGRAPHY



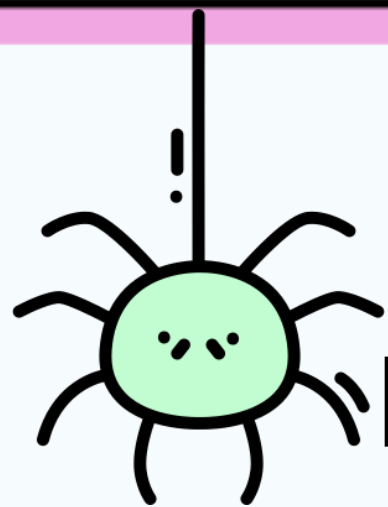
And also...

Karen Nave

(still mostly in charge)



Séance Time



How to Reach Karen... (after you've tried the website – www.SLHSTheatre.com)

navek@slcs.us

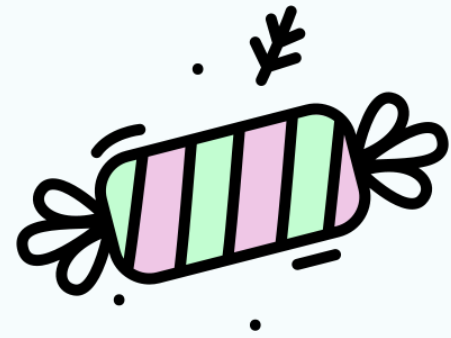
248.895.2620

Email me!

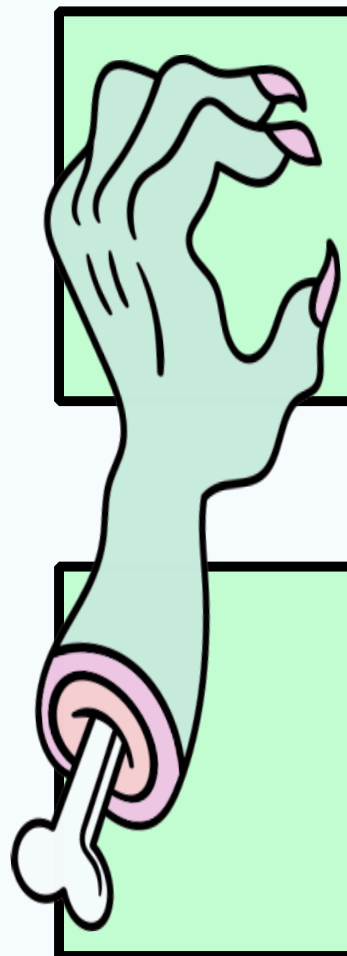
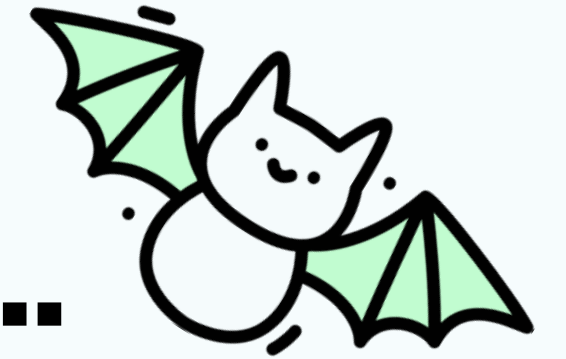
Text Me



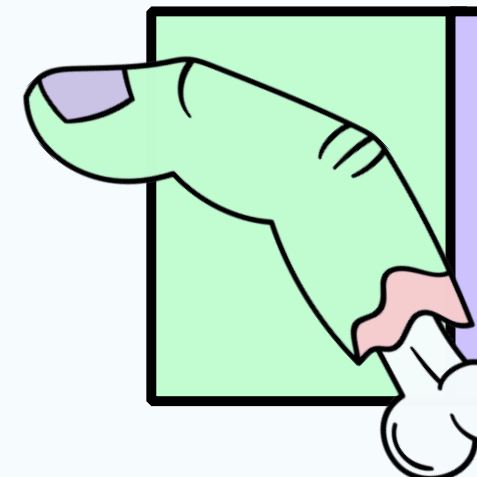
Gravediggers



People who are doing the hard work...



Aria Allman Evan Reinwand
Stage Managers



Olariu Payton Cole
Asst. Stage Mgrs.



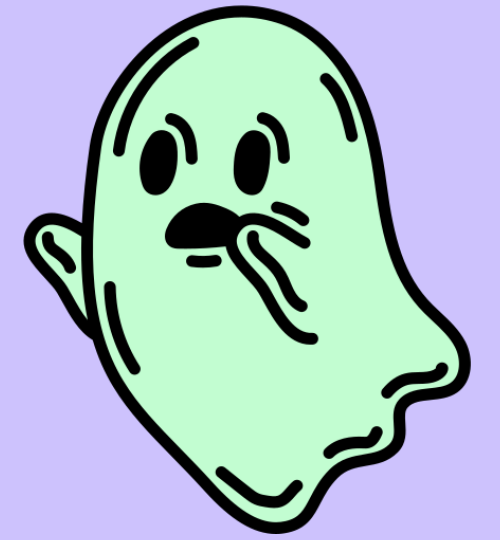
VOCAL CAPTAINS

Lilly Swanson
Tan Ava
Quincy Chamberlin

DANCE CAPTAINS

Tiny Chamberlin
Elliott Sheardown
Leah Bosworth
Venus Liangis

Rules for the Dead...

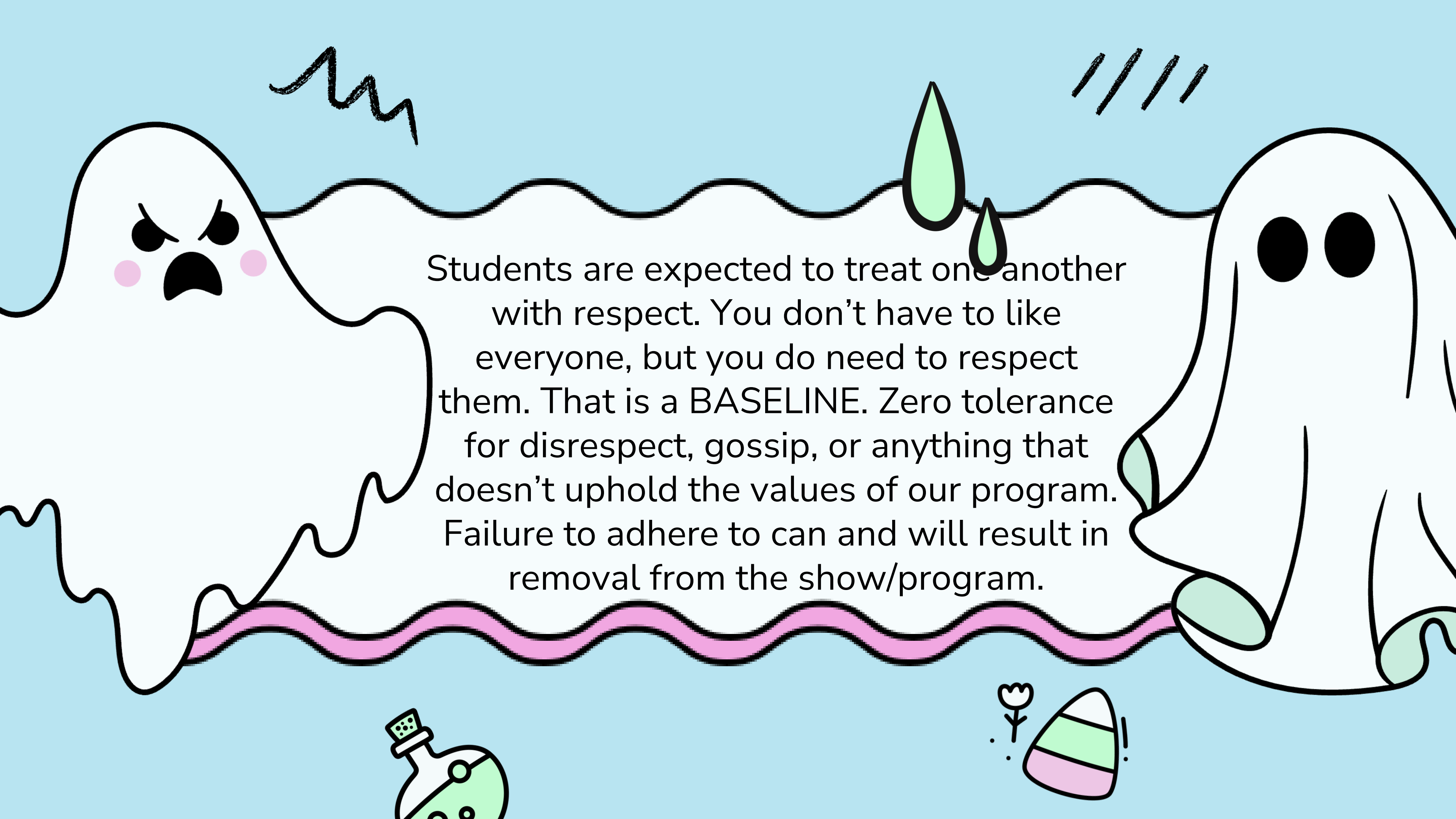


SCHOOL FIRST

- All Students **MUST** maintain good academic standing to participate (No Es).
- If rehearsal permits, homework may be done during rehearsal – as long as it does not distract from entrances, etc.
- Rehearsals may be missed for academic need (ie: tests, projects, etc.) Poor planning is no one's friend!

ABSENCES/UNEXCUSED ABSENCES + MORE!

- Absences should be known **AHEAD** of time. In the event that isn't possible, it's the **STUDENT'S** responsibility to let the Student Director know – **PRIOR** to rehearsal. Notifying 10 min into a rehearsal, that isn't an emergency, is **NOT GOOD**. And will be considered unexcused.
- Unexcused absences may result in a reduced role or removal from the show
- The last 2 weeks of rehearsal as well as performance are **MANDATORY** attendance.
- Anything missed in a rehearsal is expected to be made up by the student on their own time.
- PDA is not permitted between students who are dating. Please keep backstage (and on stage) professional. Also, no one wants to see that.
- Phone jail: certain rehearsals will have the phone jail out. **ALL** students are expected to stow their phone in the box until rehearsal is completed. Exceptions can be made for the PR/Social media team, medical needs, etc. Must be cleared with Karen **PRIOR** to rehearsal.
- **NO FOOD IN THE AUDITORIUM OR BACKSTAGE.**



Students are expected to treat one another with respect. You don't have to like everyone, but you do need to respect them. That is a **BASELINE**. Zero tolerance for disrespect, gossip, or anything that doesn't uphold the values of our program. Failure to adhere to can and will result in removal from the show/program.

Queries

Who You Gonna Call?

Blocking, Dance, Music?
Directors & Captains

Costumes?
Victoria!

Backstage, Props, Etc
Stage Managers

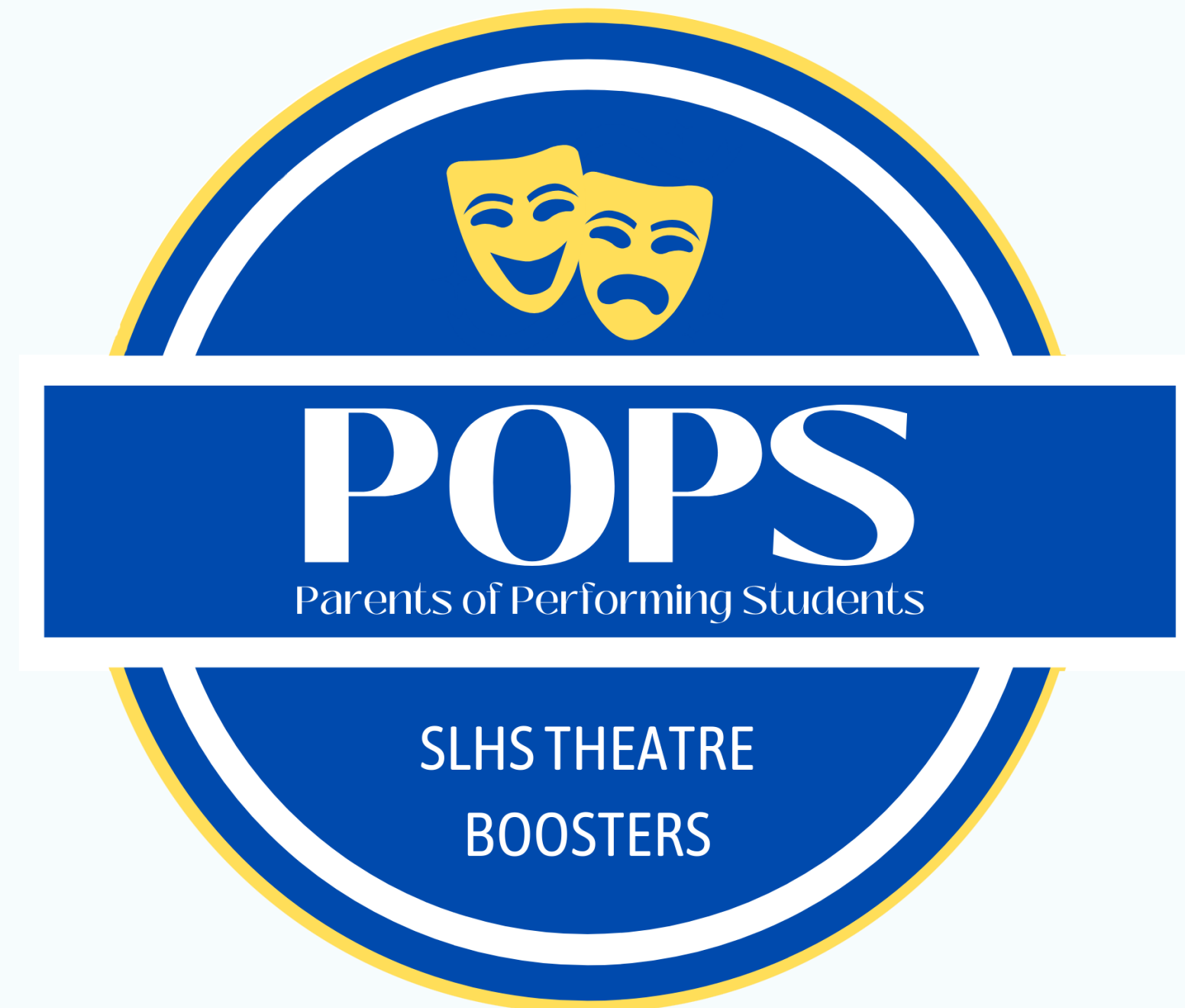
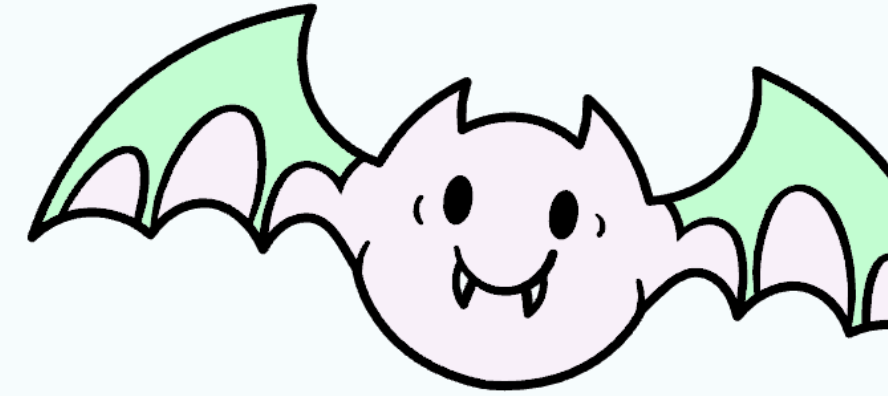
Attendance?
Julia! 734.773.9492

Karen will not know about blocking, choreography – she is a bad resource! And will probably send you to one of the above!

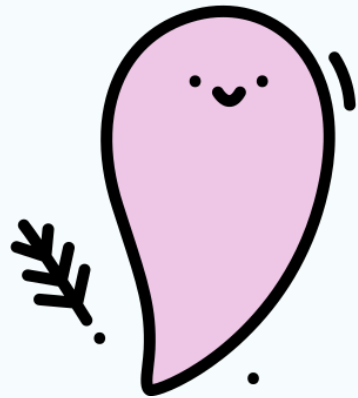




POPS!



Ghost Moms



AMANDA
PHELKA
President
Katherine Phelka

KELLY
BRIGHTON
Vice President
Jilly Brighton

AMBER
LIANGIS
Secretary
Venus Liangis

KENYSON
BORKOWSKI
Treasurer
Dino Borkowski

'26

'26

'26

'26

STACEY
KLETT
Member-at-Large
Gemma Klett

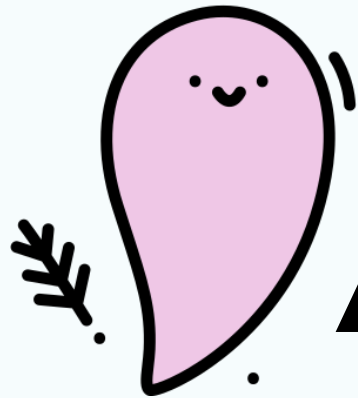
MINDY
TALBERT
Member-at-Large
Julia Lebnick

'27

'27

EMAIL: SLHSPOPS@GMAIL.COM

Spirits



All the ways you can help (what POPS does)

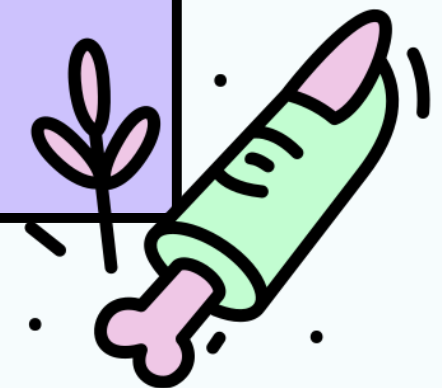
FOOD

FRONT OF HOUSE

BLITZ!

April 18th

MORE!



Tombstones Yard Signs





NOW!

**Our Next POPS meeting
following this meeting in
the choir room**

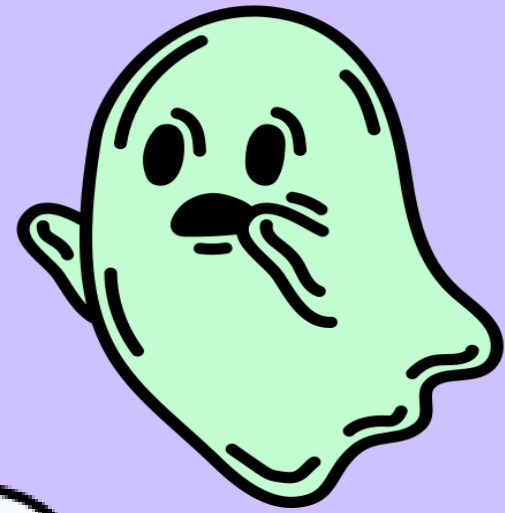


Ms
**SET
BUILD**

5/2 @10am



PRODUCTION FEE \$35



SLHS Fee \$50



MERCH



Programs



BREAK A LEG
CHARLOTTE! WE
ARE SO PROUD OF
YOU!

LOVE,
MOM AND DAD

Weston,
So proud of all that you
have accomplished. Can't
wait to see you on stage.
Enjoy every minute!
Love,
Mom and Dad



Alexa,
We are so incredibly proud of
you! Always knew you were
bound for the stage and we
have enjoyed watching you
through the years. From dance
recitals to Humpty Dumpty,
from 80's to Annelie, it's been
an incredible journey.
Love you lots!

PROGRAM ADVERTISEMENTS

- Ads can be from a business or personal!
- Why do we need these?
 - Theatre is 100% self-funded
 - They help pay for programs, posters, and more!
 - Strengthen community relationships (captive audience)
 - Show your kids your care about them without having to talk to them!



Call today to schedule your complimentary consultation.

CD Orthodontics
Christine D'Amico DMD MS
CDOrthodontics.com | 784-822-8750

FAMILY FRIENDLY ORTHODONTIC OFFICE
11115 Lyon Center Dr #E New Hudson, MI 48129

THE LATEST TECHNOLOGY
Digital scanning, 3-D printing and absolutely no impressions ever!

- Digital 3-D scanning and digital wax
- Digital 3-D printing and absolutely no impressions ever!
- Digital 3-D printing and absolutely no impressions ever!
- Digital 3-D printing and absolutely no impressions ever!

30754 Lyon Center Drive, New Hudson, MI 48129

Congratulations to the cast/crew of Steel Magnolias and Its a Wonderful Life

SENECHAL FAMILY CHIROPRACTIC

30802 Lyon Center Dr #E
New Hudson, MI
248.486.4000
senechalfamilychiropractic.com

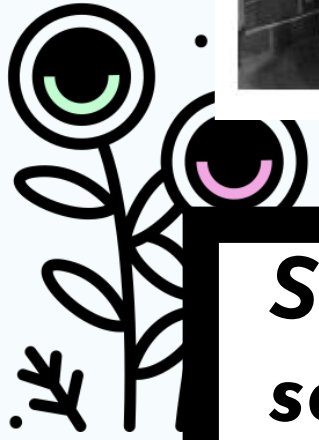
Journey Together

JourneyTogetherPC.com

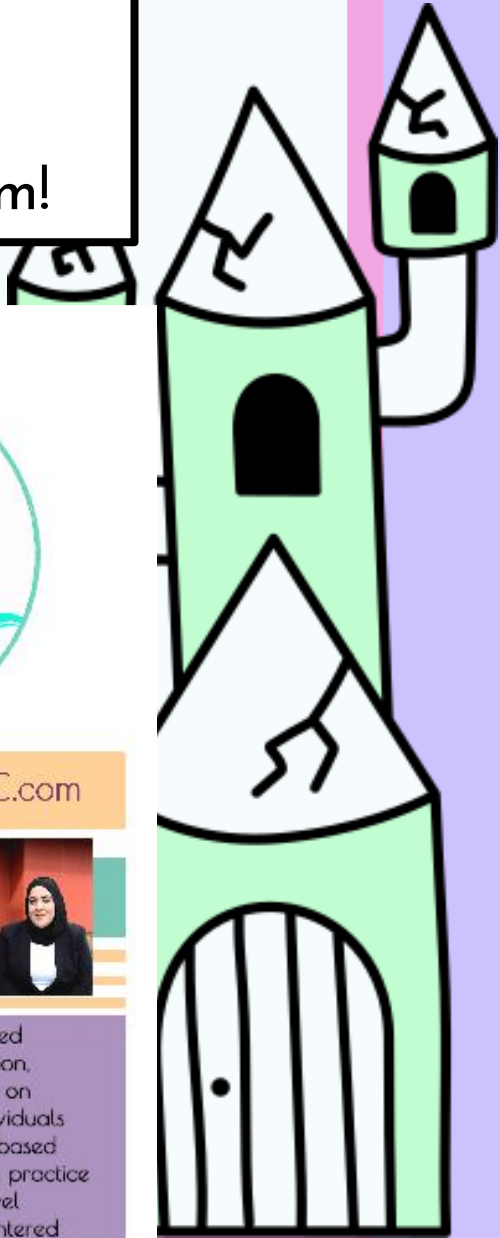
(248) 985-3580

Located in Plymouth, MI

Journey Together provides client centered psychological services including evaluation, education, and therapy. We are focused on meeting the psychological needs of the individuals and communities we serve with innovation based on experience and science. We are a growing practice owned and operated by a doctoral level psychologist that is dedicated to person-centered and results driven care. We meet you where you are and help you get to the best, most authentic version of yourself. Let us help you get to your best self. Together.



Students are REQUIRED to sell two (2) advertisements! Or pay the equivalent (\$10)





Tickets

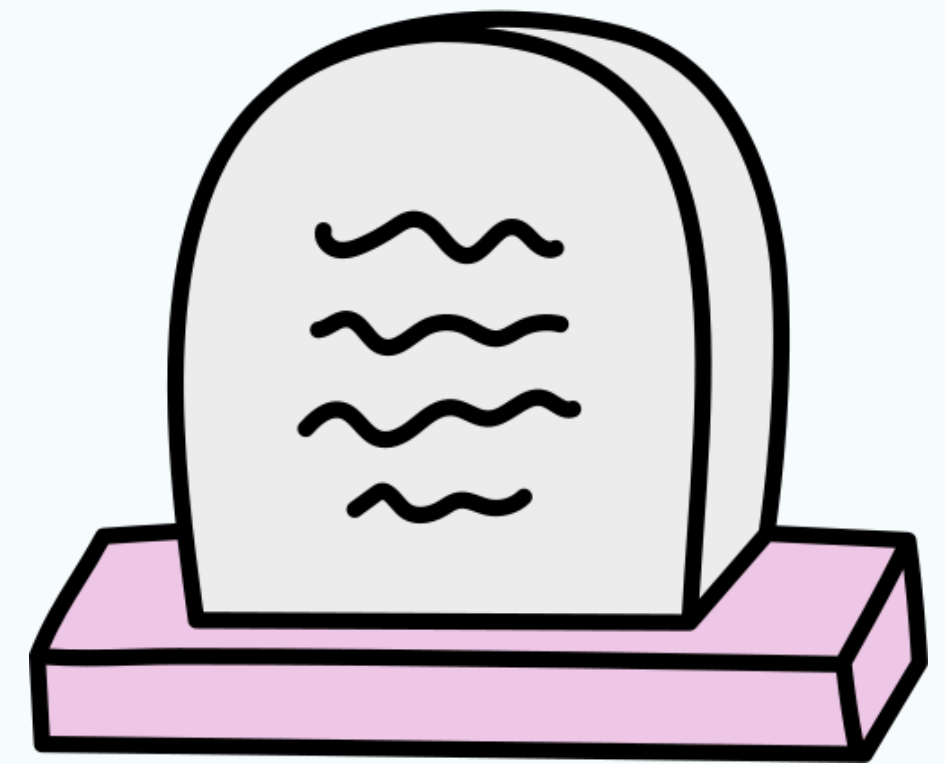
**“Tickets” go on sale
exclusively to cast/crew 1-2
week before the public**

**On sale to the
public 4/18**

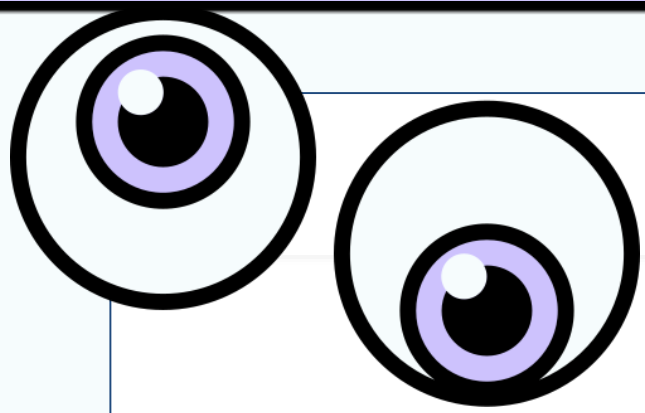
Ghost Points



Varsity Letter



TTS #1231

[HOME](#)[2024-2025 SEASON](#)[AUDITIONS](#)[THESPIAN BOARD](#)[POPS](#)[STAGE STRUCK PODCAST](#)[TICKETS](#)[MEET THE BOARD](#)[ITS POINTS & INFO](#)[BOARD INFO & DOCS](#)

Troupe #1231: ITS POINTS - HOW YOU GET THEM AND WHAT YOU GET

Students can earn points every time they participate in theatre related activities, whether at SLHS or else where. This includes being part of the cast, crew, or PIT as well as participating in workshops, outside theatre, and attending performances. ITS Points are managed by the Thespian Board Vice President and approved by the theatre director (Karen). Points add up! They determine honors, varsity letter awards, and more!

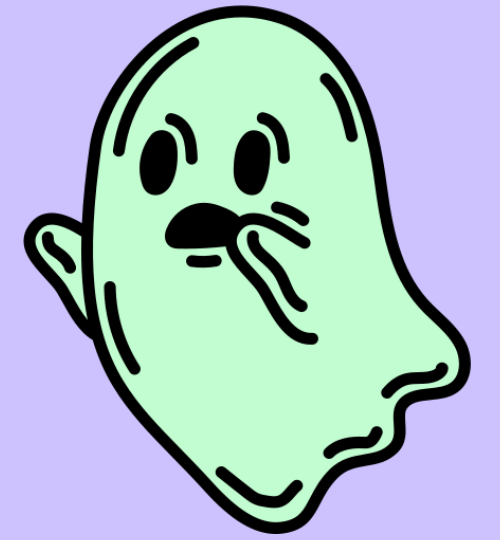
POINT SYSTEM
(How Do I Earn Points)

AWARD SYSTEM
(What Do I Get With My Points)

**Check
Your
ITS
Points
Here**

**Submit
Your
ITS
Points**

Thespian Board



Dino Borkowski '26 - President

Ava Guldi '26 - President

Julia Lebnick '27 - Vice President/ITS

Max Bardoni '26 - Secretary

Tegan Wusthoff '26 - Public Relations Mgr

Katherine Phelka '26 - Historian

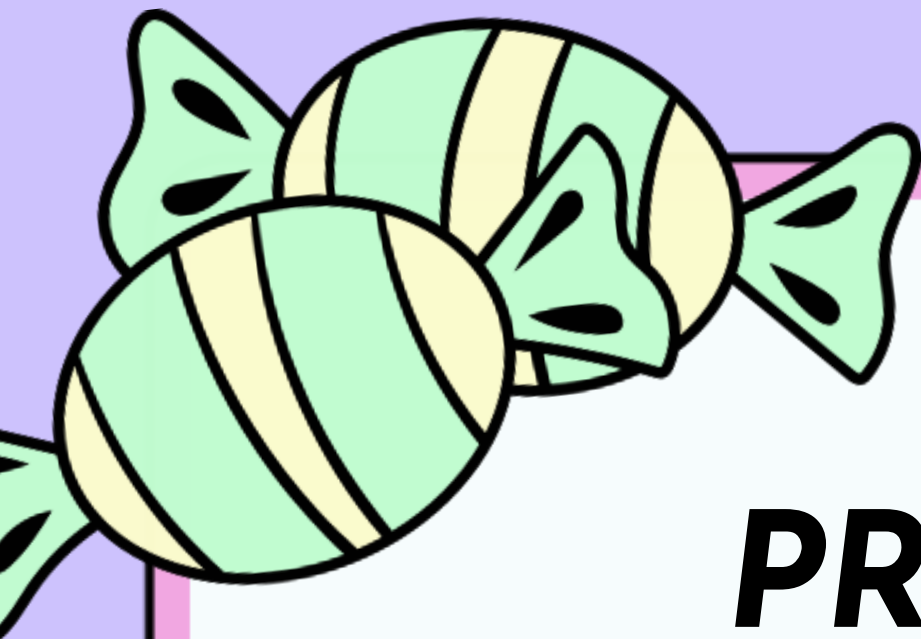
Conner Elliott '26 - Crew Representative

Venus Liangis '26 - Senior Representative

Lilly Swanson '27 - Junior Representative

Allie Cauchi '28 - Sophomore Rep

Kaitlyn Chamberlin '29 - Freshmen Rep



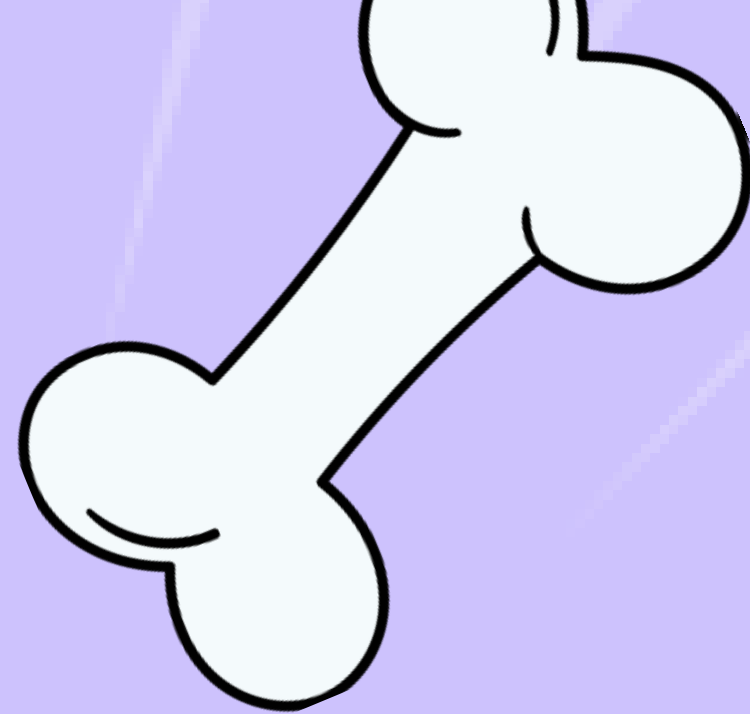
Say My Name

PR/SOCIAL MEDIA

- Tegan Wusthoff '26 (PR MGR)**
- Jilly Brighton '26**
- Ismah Hasan '26**
- Allayna Sullivan '29**

With over 1.5 million views - our social media is the best place for information, behind the scenes looks, entertainment, and more!
[@SLHSTheatreMI](#)





QUESTIONS?

